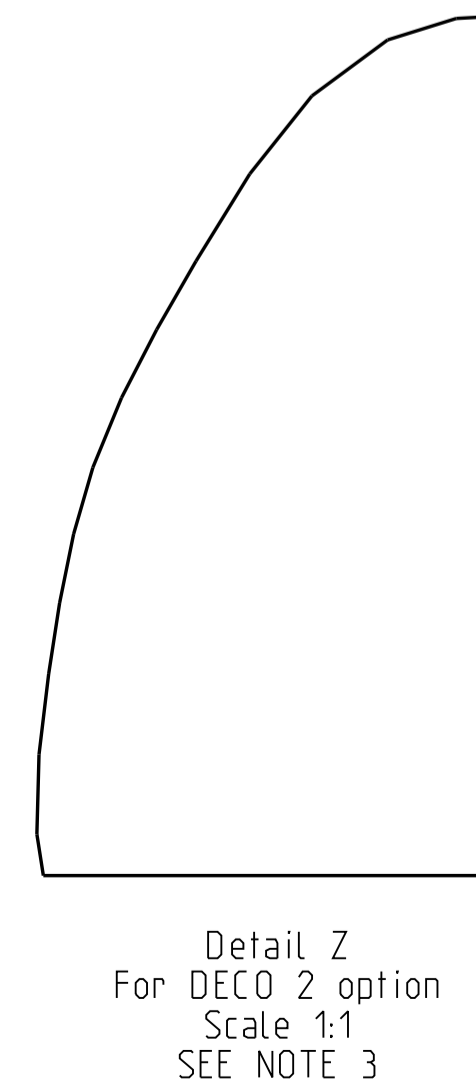
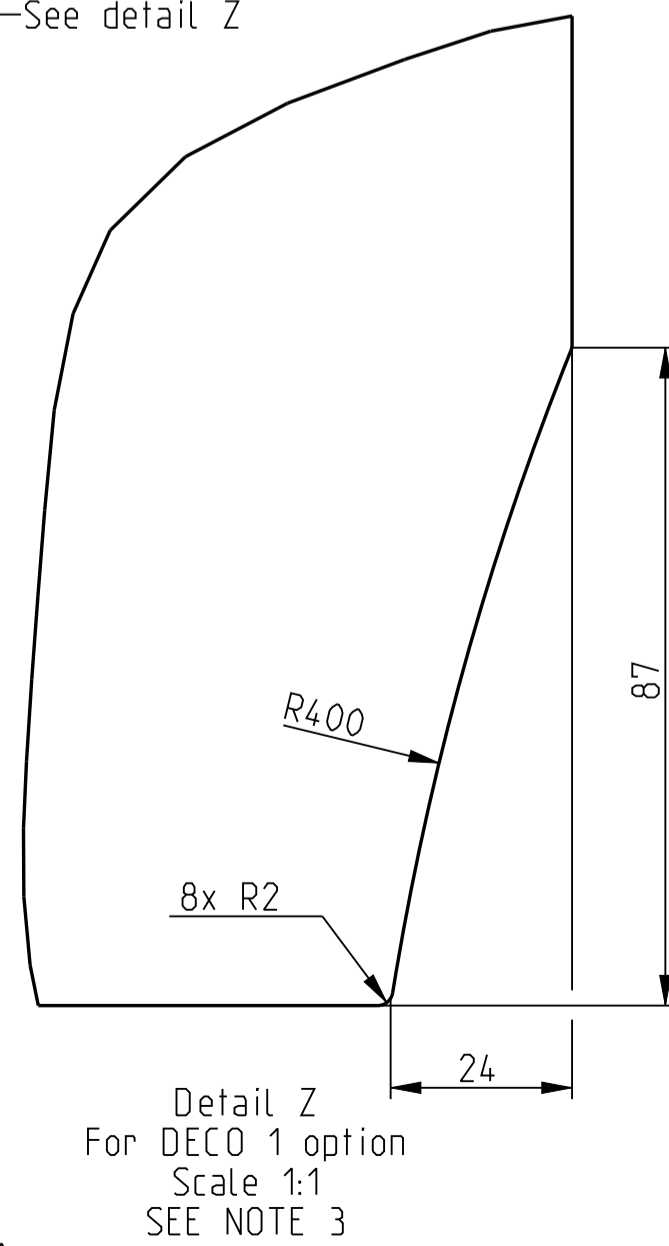
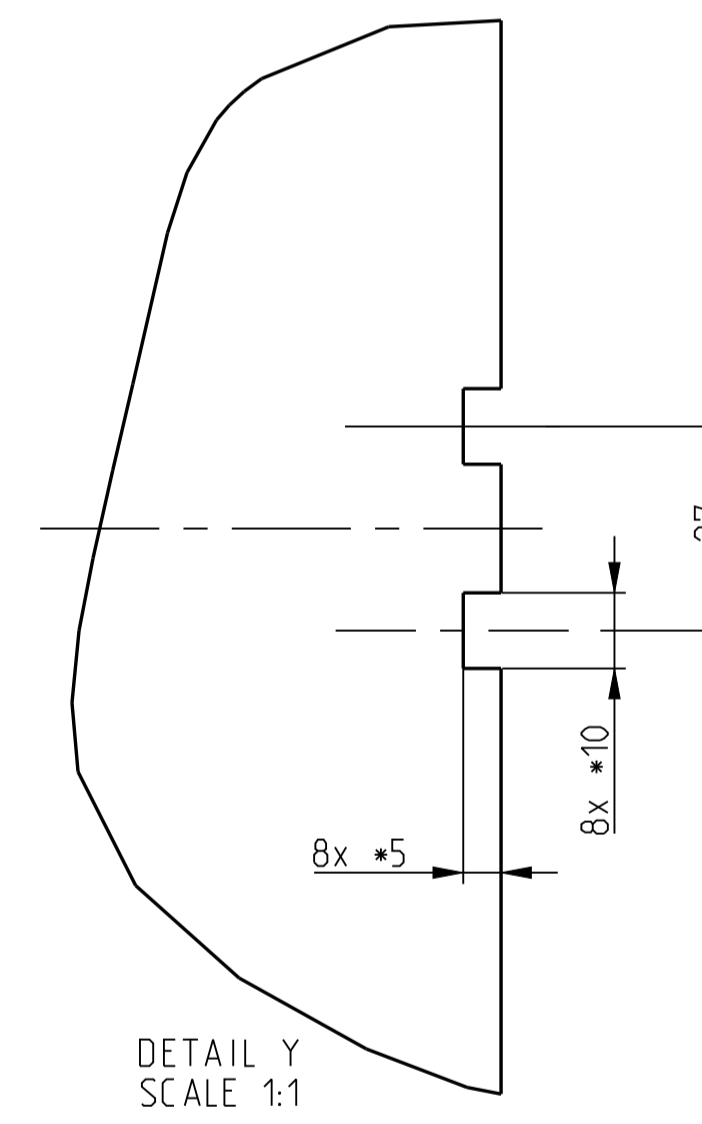
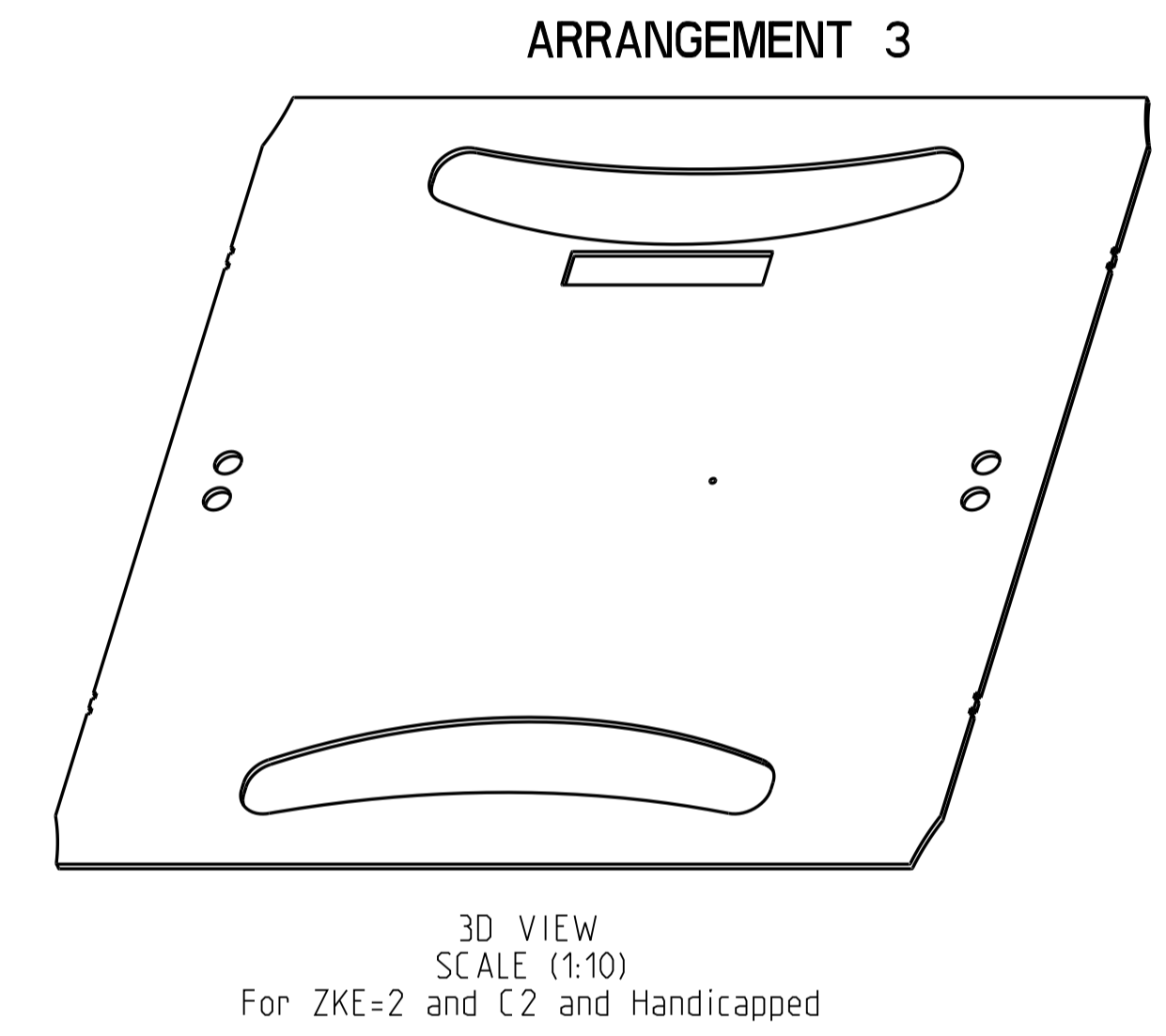
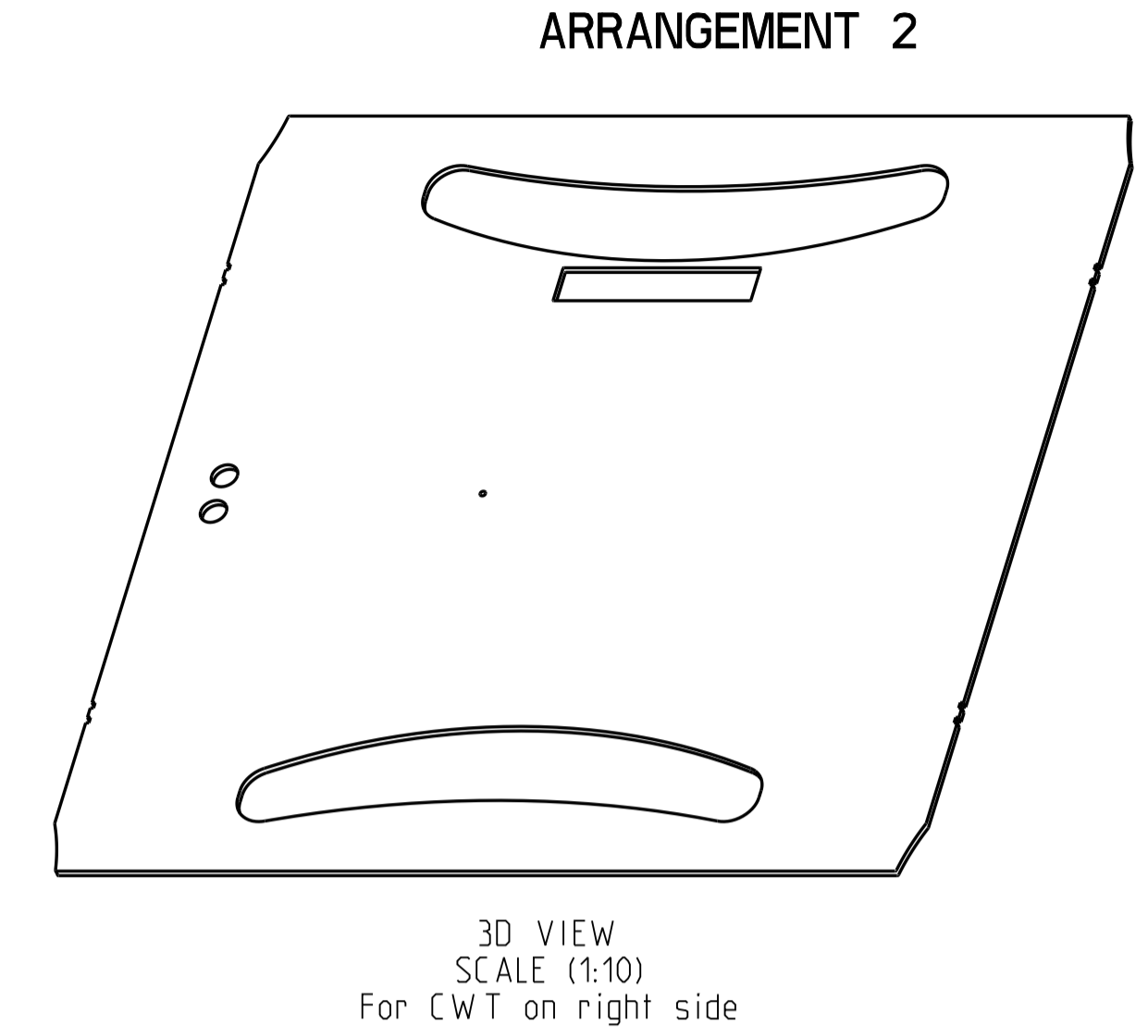
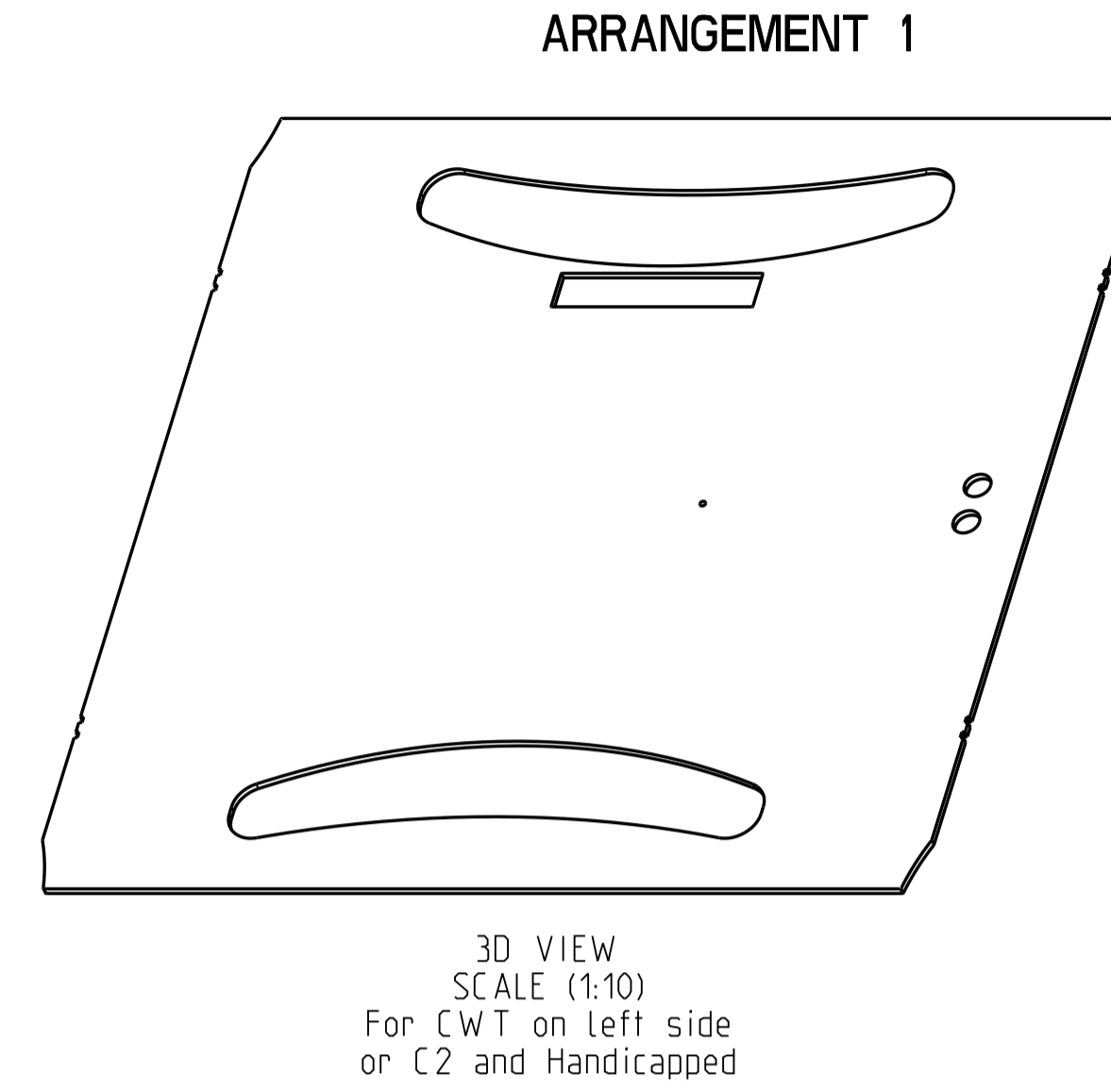
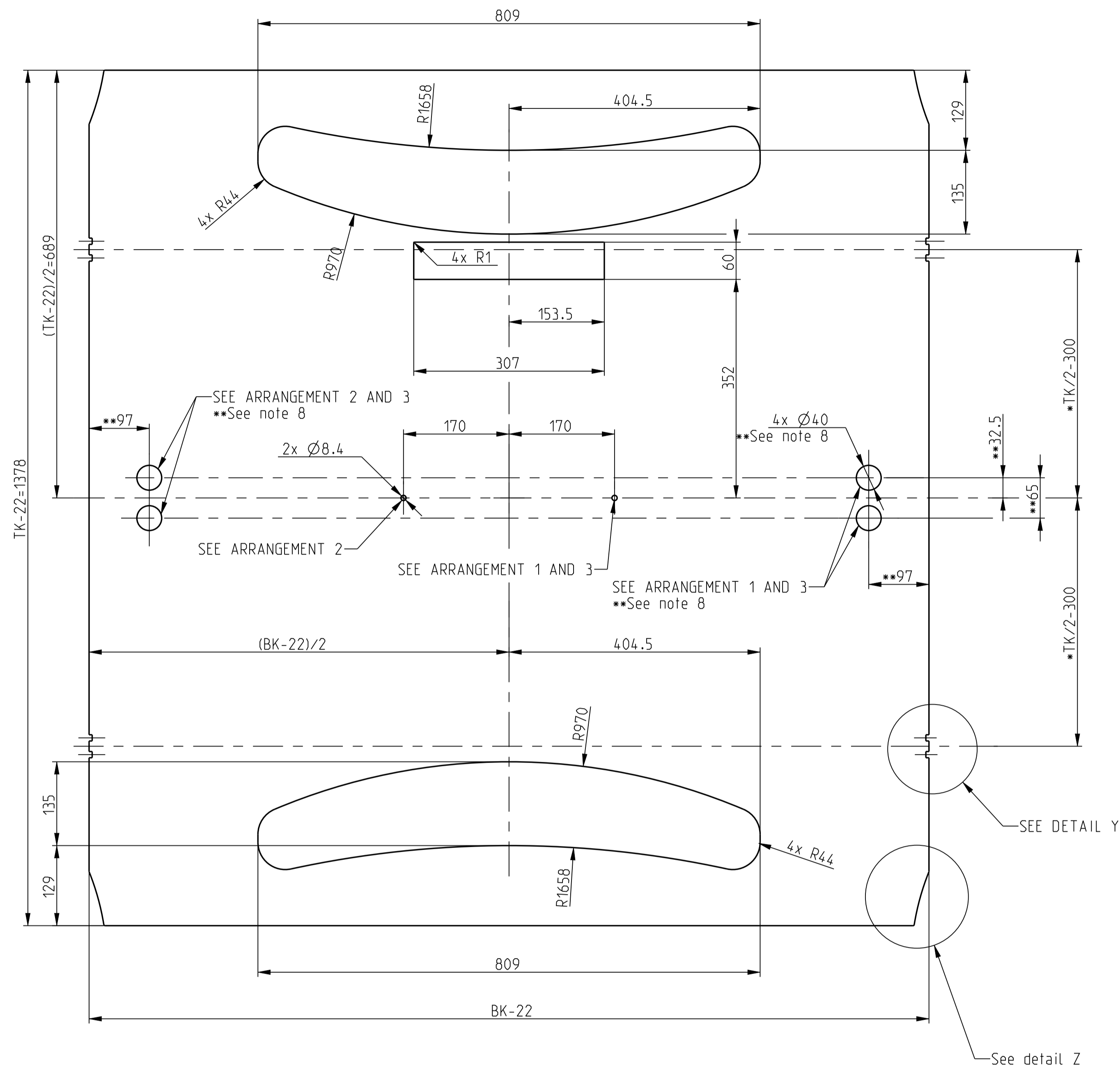


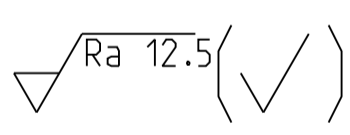
General tolerances DIN6930-m	General tolerances ISO 2768	Forming	Separating
Steel stampings 9-32316E	Linear dimension	+120	+120
OT	Broken edges	m	m
General tolerances ISO 9013-34.2	Angular dimension	v	c
	Form and position	L	K

### CURVE OPTION (For COP Surface)



Notes:

- All sharp edges removed.
- ZKE = Number Car Entrance;  
C2 = Central door opening;  
CWT = Counterweight.
- All corners are equal to shown on Detail Z (according DECO 1 or DECO 2 option).
- Shown in drawing and used to calculate weight: ID. 51949789.
- For thermal cutting process, all sharp corners can be rounded with 1mm radius.
- \* Add cut 5x10 with \* only for honeycomb 10,4 mm.
- # Alternative Material 59346137 (10,4mm) for BK1100 and BK1200.
- \*\*Rule: Only for COP without emergency Light;
- For thermal cutting process, all sharp corners can be rounded with 1mm radius.



51949790	Deco Honeycomb Medium - BK=1575 mm - T=10.4 mm	59346137	6.177
51949789	Deco Honeycomb Medium - BK=1375 mm - T=10.4 mm	59346137	5.277
51949788	Deco Honeycomb Medium - BK=1200 mm - T= 5.7 mm	59317086#	6.963
51949787	Deco Honeycomb Medium - BK=1100 mm - T= 5.7 mm	59317086#	6.278
ID Number	Description	Semi Finished Id. Number	Weight [kg]

51949789	Honeycomb Sandwich	See table	Item	Code surface	Heat treatment	Drawg / BOM / Model	Weight [kg]
Ident. No.	Semi finished product / raw material	Ident. No.	Item	Code surface	Heat treatment	Drawg / BOM / Model	Weight [kg]
Modification		AE8	Draw Ver.	8.15	Regardé		
KA No.		492976	Model Ver.	7.12	Regardé		
KA Date		2020-09-26	Release Level		Released		
Group: 01	Remark		Scale	Rescales /Ae	Prepared	2020-07-24	komishjo
Deco Honeycomb Medium		Scale 1:5	Page	1/5	Reviewed	2020-07-24	tomiatra
CA PK 31 LA		Classification 11510	Lead Office SA1	Lang. Z--44918524	Checked	2020-07-24	tomiatra
INVENTIO AG CH-6052 Hergiswil		Formal A1			Released	2020-07-28	fernanc15

Confidential  
This document contains confidential information that is proprietary to the Schindler Group. Neither this document nor the information contained herein shall be disclosed to third parties nor used for manufacturing or any other application without written consent of INVENTIO AG.

Vertraulich  
Dieses Dokument enthält vertrauliche Informationen, die geistiges Eigentum der Schindler-Gruppe sind. Die in diesem Dokument enthaltenen Informationen dürfen ohne schriftliches Einverständnis der INVENTIO AG weder Dritten gegenüber offengelegt noch für die Fertigung oder sonstigen Zwecken verwendet werden.

Confidential  
Le présent document contient des informations confidentielles qui sont la propriété du groupe Schindler. Ni ce document, ni les informations contenues dans ce dernier ne doivent être divulgués à des tiers parties, ou utilisés à des fins de fabrication sans l'accord écrit de INVENTIO AG.

\*\*  
\*\*\*\*\*  
\*\*\*\*\*

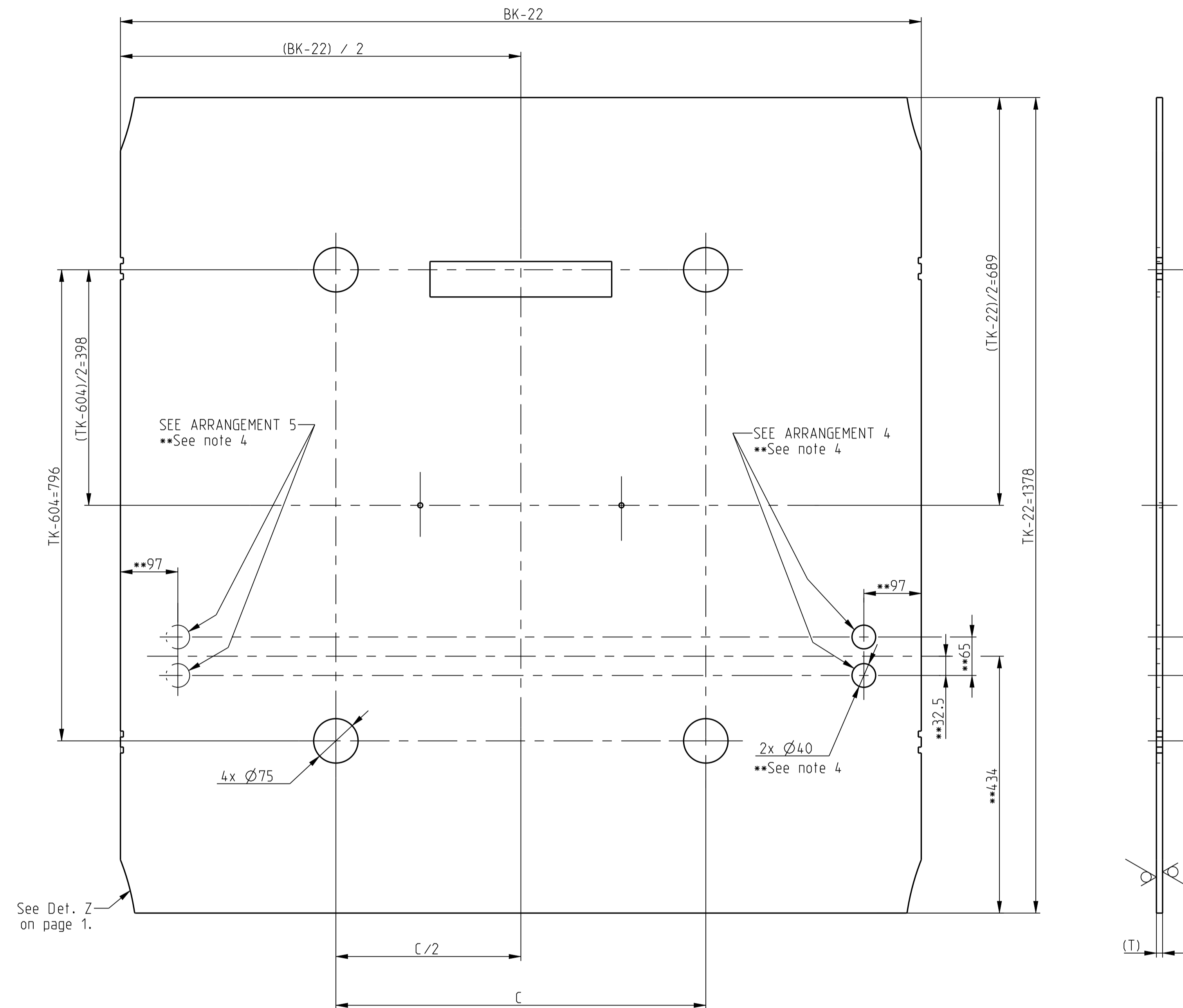
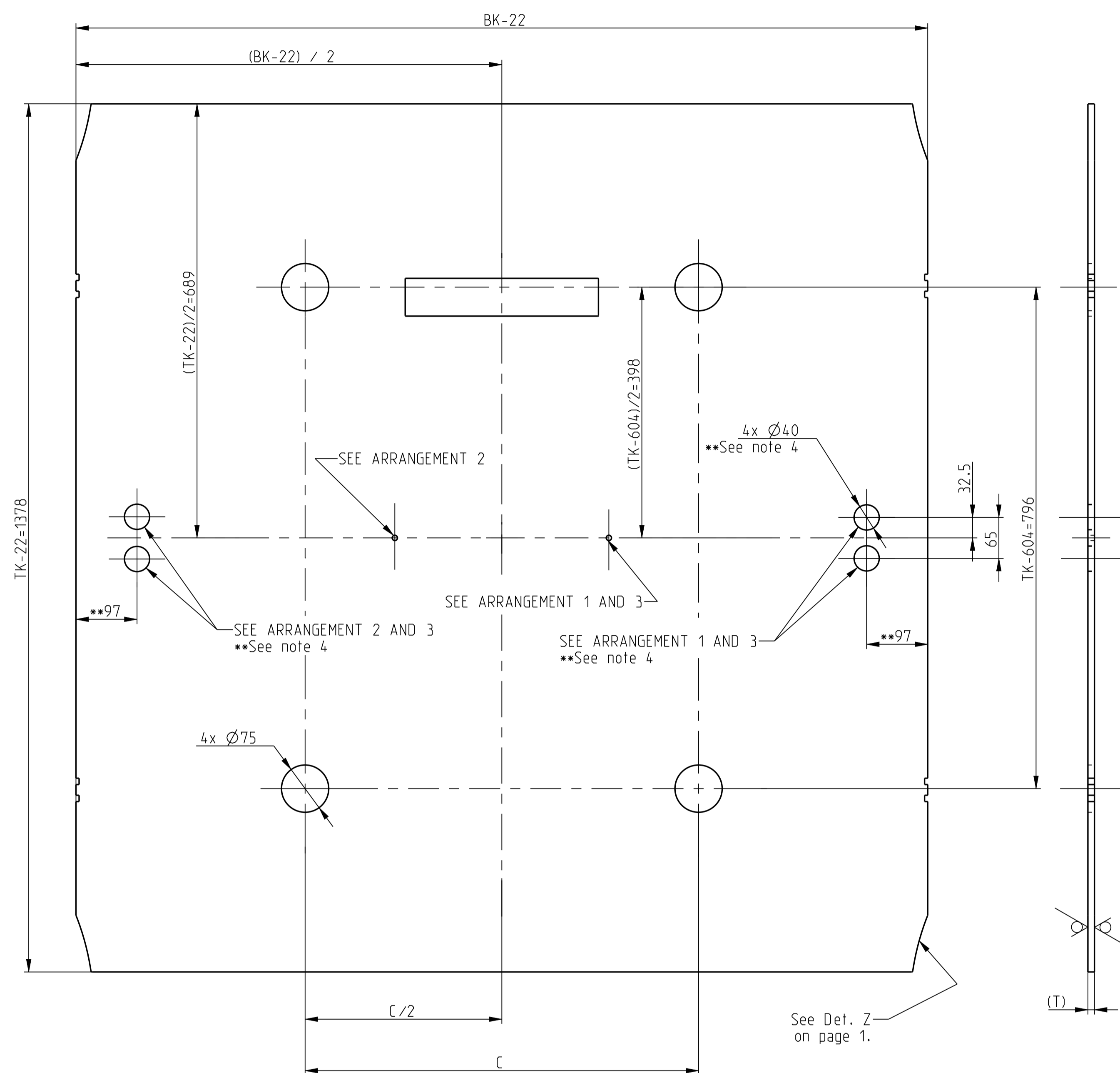


**SPOT OPTION  
(For COP Surface)**

**SPOT OPTION  
(For COP Full Height)**

General tolerances DIN6930-m  
Steel stampings 9-32316E  
OR  
General tolerances ISO 9013-342

General tolerances ISO 2768	Forming ±120	Separating ±120
Linear dimension	m	m
Broken edges	c	c
Angular dimension	v	c
Form and position	9-32313E	L



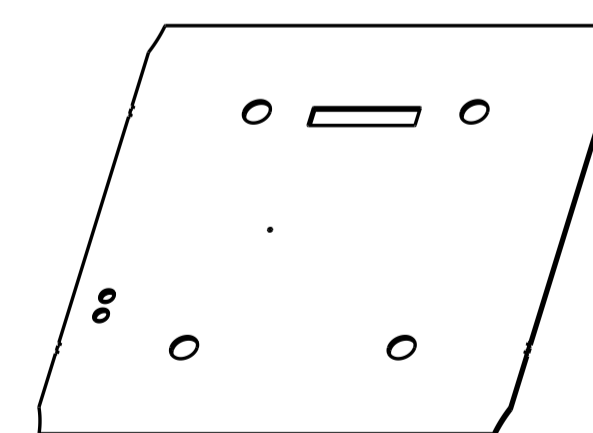
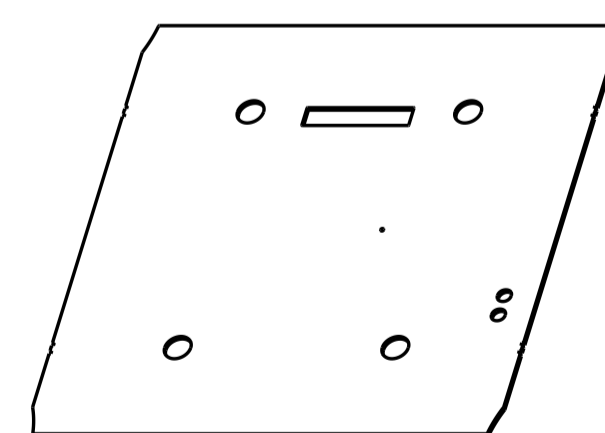
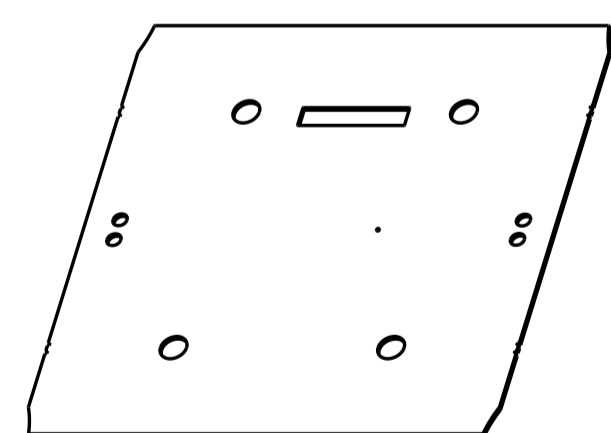
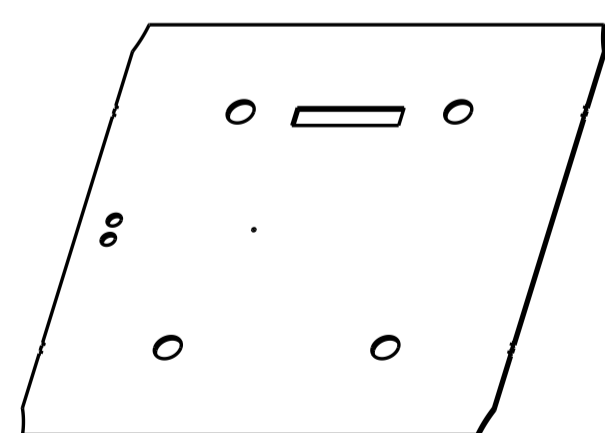
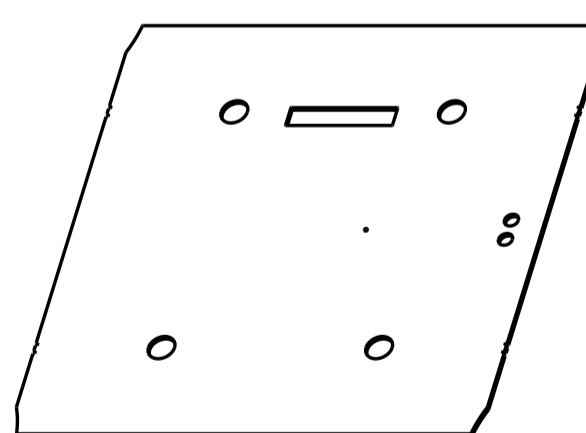
**ARRANGEMENT 1**

**ARRANGEMENT 2**

**ARRANGEMENT 3**

**ARRANGEMENT 4**

**ARRANGEMENT 5**



3D VIEW  
SCALE (1:20)  
For CWT on left side  
Or C2 and Handicapped

3D VIEW  
SCALE (1:20)  
For CWT on right side

3D VIEW  
SCALE (1:20)  
For ZKE=2 and C2 and Handicapped

3D VIEW  
SCALE (1:20)  
For CWT on left side  
Or C2 and Handicapped

3D VIEW  
SCALE (1:20)  
For CWT on right side

BK	C	TK	Weight [kg]
1100	450	1400	4.059
1200	450		4.883
1375	625		5.848
1575	825		6.537

Notes:

- Others dimensions, dimensions T, BK and TK, details, notes, rules and table - See Page 1/5.
- Shown on drawing: T=10.4; BK=1375 and TK=1400.
- All sharp edges removed
- \*\*Rule: Only for COP without emergency light;
- For thermal cutting process, all sharp corners can be rounded with 1mm radius.

√ Ra 12.5 (✓)

51949789	Honeycomb Sandwich - 10,4mm	51946137	Item	Code surface	Heat treatment	Drawn / BOM / Model	Weight [kg]
Ident. No.	Semi finished product / raw material	Ident. No.	Item	Code surface	Heat treatment	Drawn / BOM / Model	Weight [kg]
Modification		AE8	Draw Ver.	Revised BOM			
KA No.		492976	8.15	Revised BOM			
KA Date		2020-09-26	Model Ver.	Revised BOM			
			6.5	Release Level	Released		
Group: 01	Remark	Scale	Replaces /Ae	Prepared	2020-07-24	tomishjo	
Deco Honeycomb Medium		1:5		Reviewed	2020-07-24	tomiatra	
CA PK 31 LA		Page		Norms checked	2020-07-24	tomiatra	
		3/5		Released	2020-07-28	fernanct5	
INVENTIO AG	CH-6052 Hergiswil	Classification	Lead Office	Name			
		11510	SA1	Z--44918524			
		Format: A1		Lang:			EN

Confidential  
This document contains confidential information that is proprietary to the Schindler Group. Neither this document nor the information contained herein shall be disclosed to third parties nor used for manufacturing or any other application without written consent of INVENTIO AG.

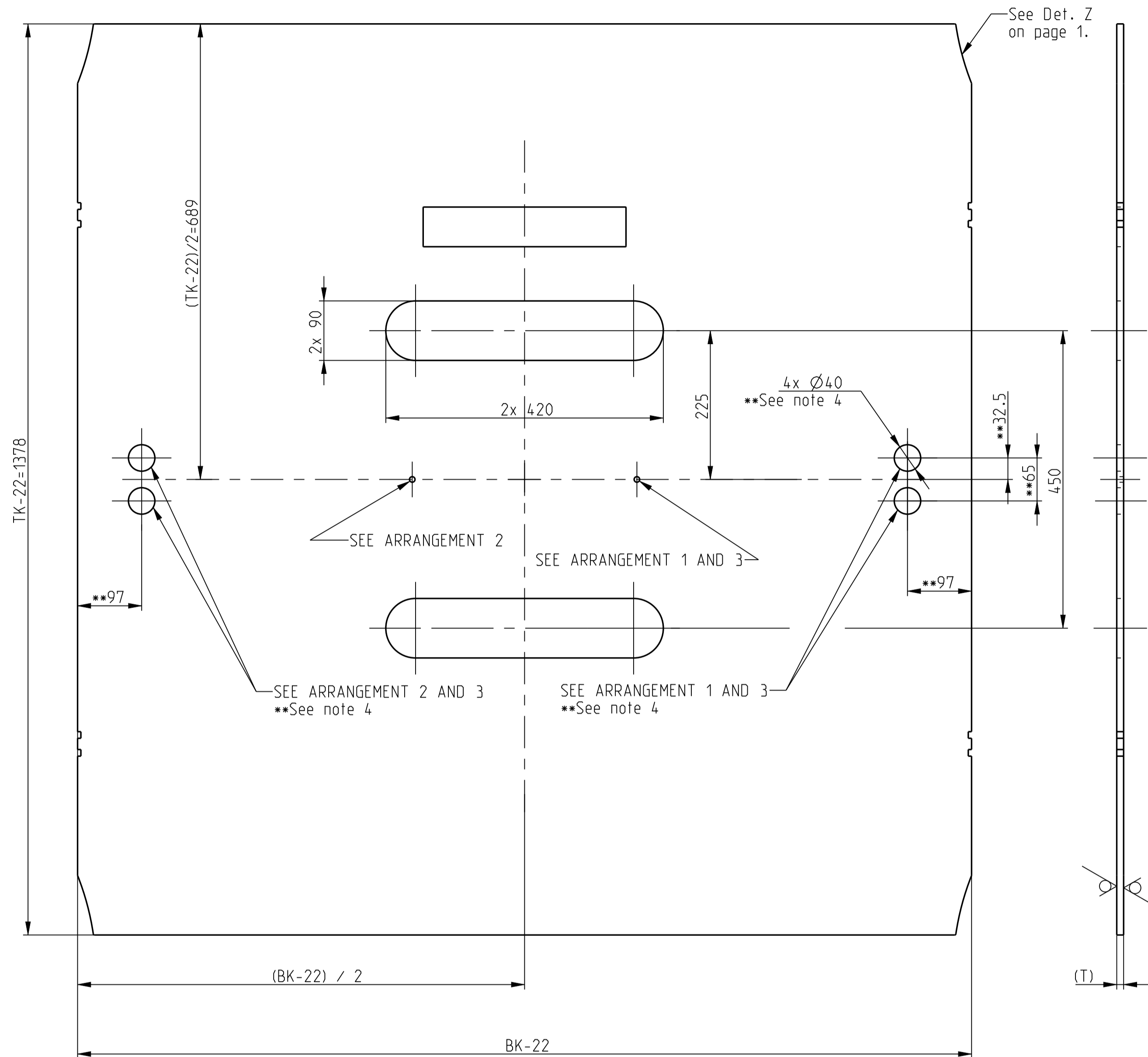
Vertraulich  
Dieses Dokument enthält vertrauliche Informationen, die geistiges Eigentum der Schindler-Gruppe sind. Die in diesem Dokument enthaltenen Informationen dürfen ohne schriftliches Einverständnis der INVENTIO AG weder Dritten gegenüber offengelegt noch für die Fertigung oder sonstigen Zwecken verwendet werden.

Confidential  
Le présent document contient des informations confidentielles qui sont la propriété du groupe Schindler. Ni ce document, ni les informations contenues dans ce dernier ne doivent être divulgués à des tiers, parties, ou utilisées à des fins de fabrication sans l'accord écrit de INVENTIO AG.

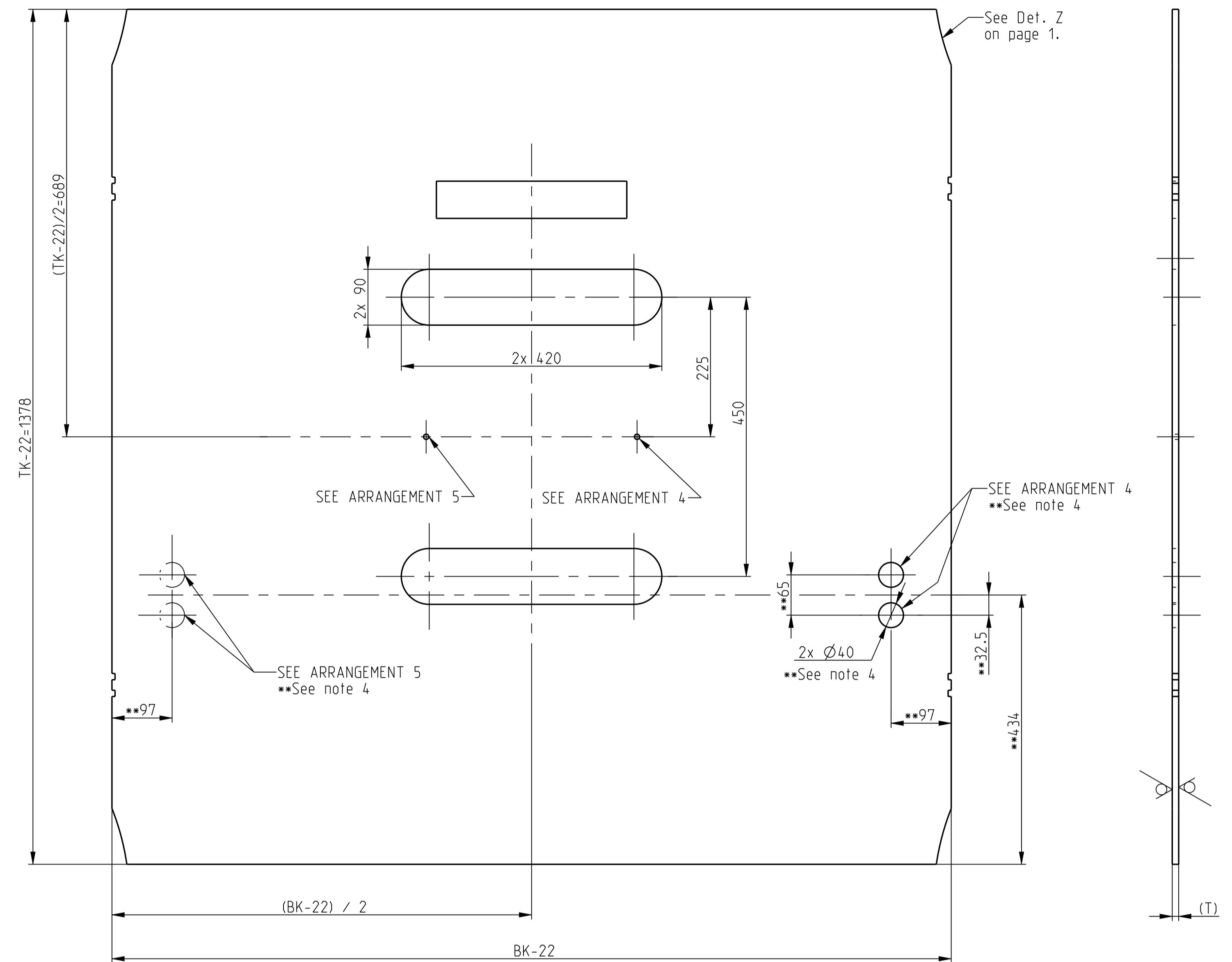
\*\*  
\*\*\*\*\*  
\*\*\*\*\*

Copyright © 2017 INVENTIO AG All rights reserved.  
INVENTIO AG, Seestrasse 55, CH-6052 Hergiswil, owns and retains all copyrights and other intellectual property rights in this document. Any reproduction, translation, copying or storing in data processing units in any form or by any means without prior permission of INVENTIO AG is regarded as infringement and will be prosecuted.

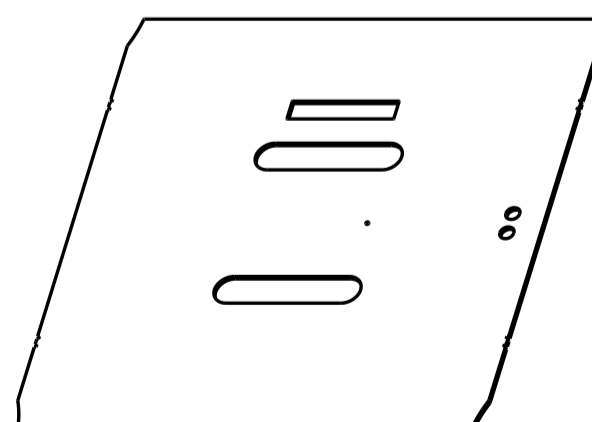
LINE OPTION  
(For COP Surface)



LINE OPTION  
(For COP Full Height)

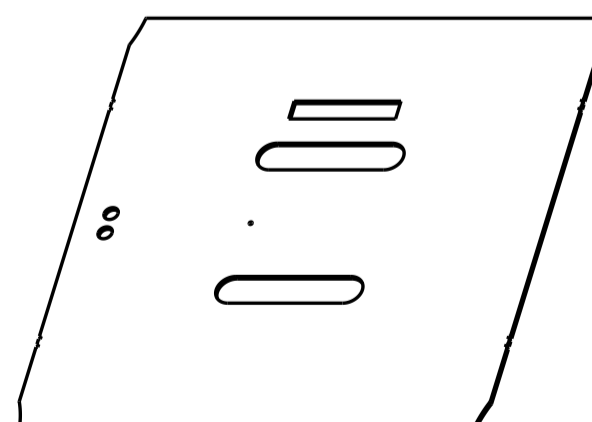


ARRANGEMENT 1



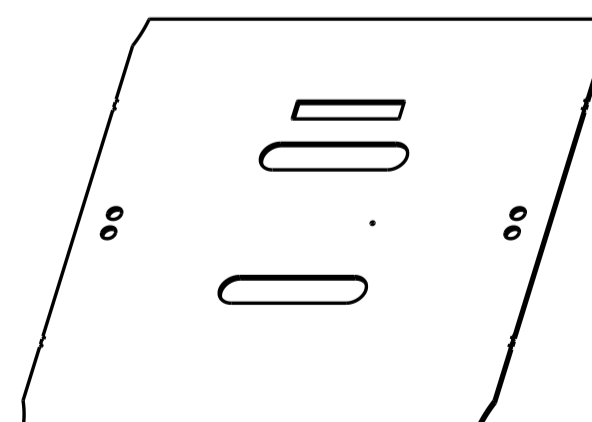
3D VIEW  
SCALE (1:20)  
For CWT on left side  
Or C2 and Handicapped

ARRANGEMENT 2



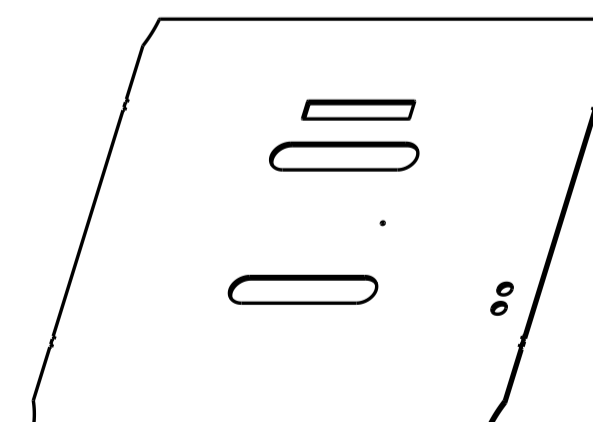
3D VIEW  
SCALE (1:20)  
For CWT on right side

ARRANGEMENT 3



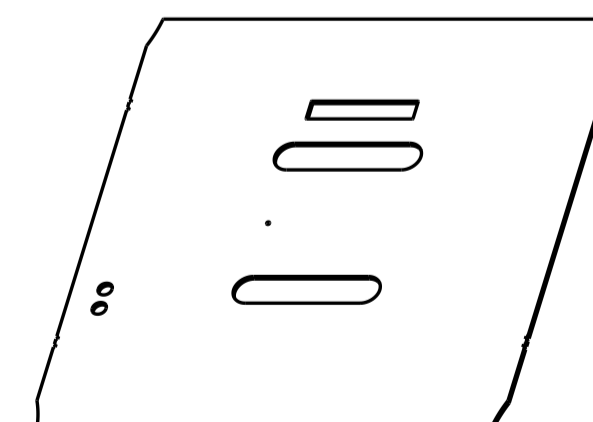
3D VIEW  
SCALE (1:20)  
For ZKE=2 and C2 and Handicapped

ARRANGEMENT 4



3D VIEW  
SCALE (1:20)  
For CWT on left side  
Or C2 and Handicapped

ARRANGEMENT 5



3D VIEW  
SCALE (1:20)  
For CWT on right side

BK	TK	Weight [kg]
1100	1400	4.059
1200		4.883
1375		5.673
1575		6.537

Notes:

- Others dimensions, dimensions T, BK and TK, details, notes, rules and table - See Page 1/5.
- Shown on drawing: T=10.4; BK=1375 and TK=1400.
- All sharp edges removed
- \*\*Rule: Only for COP without emergency light;
- For thermal cutting process, all sharp corners can be rounded with 1mm radius.

√ Ra 12.5 (✓)

Ident. No.	59346137	Item	Code surface	Heat treatment	Draw / BOM / Model	See table
59346137	59346137	Item	Code surface	Heat treatment	Draw / BOM / Model	See table
Modification	AE8	Draw Ver.	5.5	Released	Released	
KA No.	492976	B.15	5.5	Released	Released	
KA Date	2020-09-26	Model Ver.	5.5	Released	Released	
Group: 01						
Deco Honeycomb Medium						
CA PK 31 LA						
INVENTIO AG CH-6052 Hergiswil						
Classification 11510						
Lead Office SA1						
Z--44918524						
Lang: EN						

Confidential  
This document contains confidential information that is proprietary to the Schindler Group. Neither this document nor the information contained herein shall be disclosed to third parties nor used for manufacturing or any other application without written consent of INVENTIO AG.

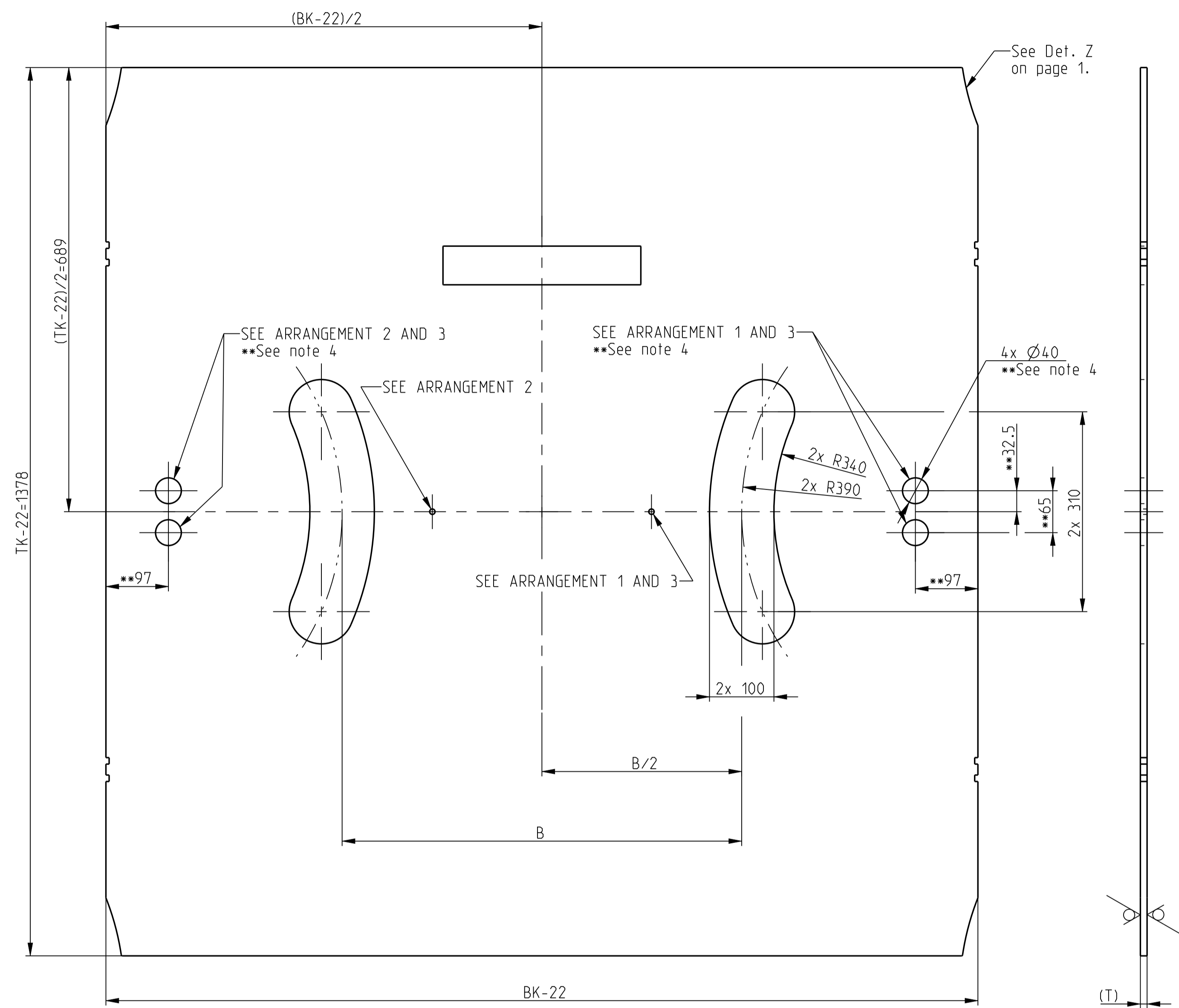
Vertraulich  
Dieses Dokument enthält vertrauliche Informationen, die geistiges Eigentum der Schindler-Gruppe sind. Die in diesem Dokument enthaltenen Informationen dürfen ohne schriftliches Einverständnis der INVENTIO AG weder Dritten gegenüber offengelegt noch für die Fertigung oder sonstigen Zwecken verwendet werden.

Confidential  
Le présent document contient des informations confidentielles qui sont la propriété du groupe Schindler. Ni ce document, ni les informations contenues dans ce dernier ne doivent être divulgués à des tiers parties, ou utilisés à des fins de fabrication sans l'accord écrit de INVENTIO AG.

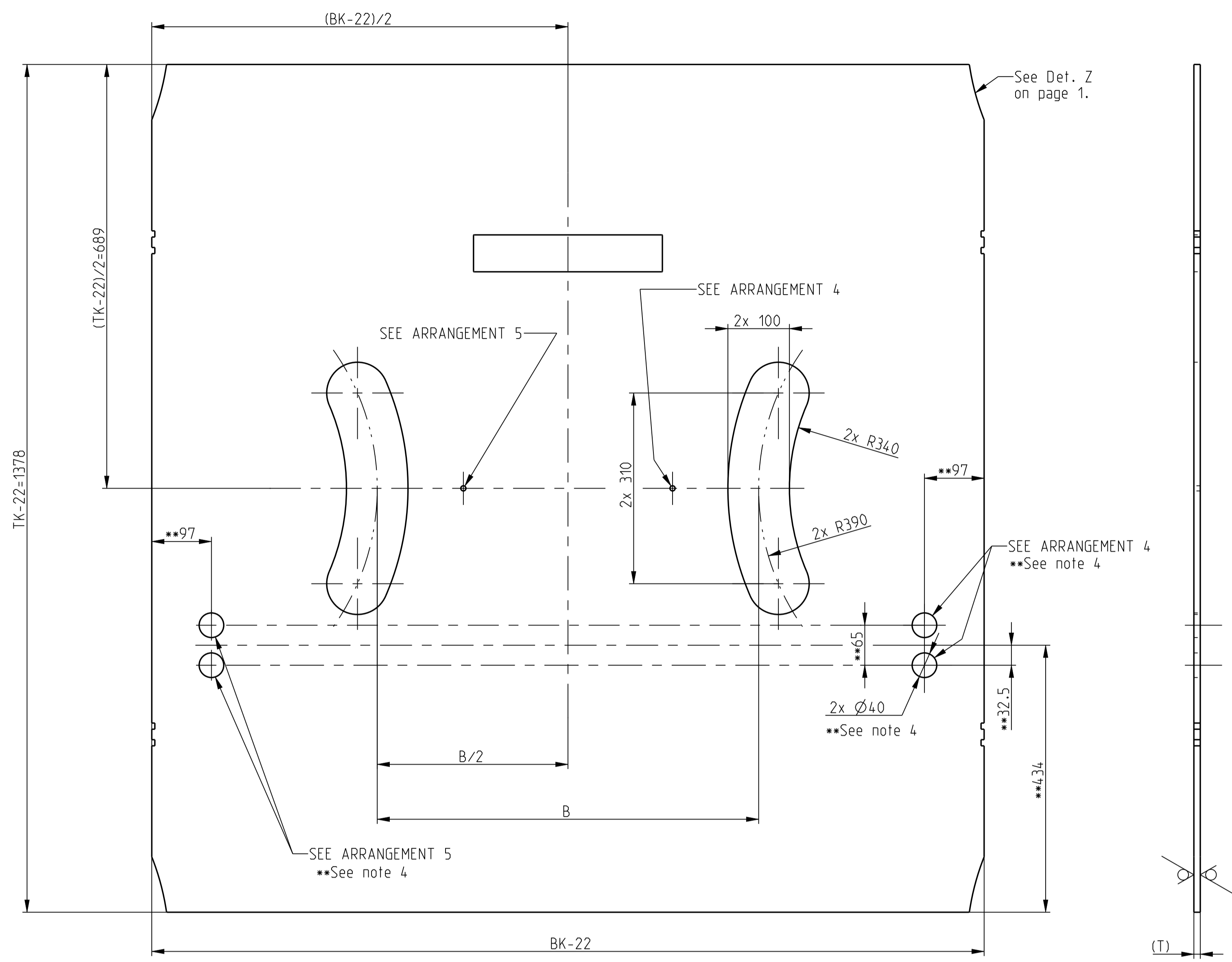
\*\*  
\*\*\*\*\*  
\*\*\*\*\*

Copyright © 2017 INVENTIO AG All rights reserved.  
INVENTIO AG, Seestrasse 55, CH-6052 Hergiswil, owns and retains all copyrights and other intellectual property rights in this document. Any reproduction, translation, copying or storing in data processing units in any form or by any means without prior permission of INVENTIO AG is regarded as infringement and will be prosecuted.

**BRACKET OPTION  
(For COP Surface)**



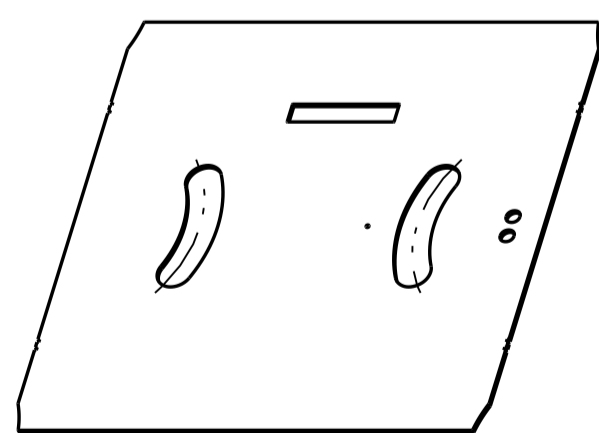
**BRACKET OPTION  
(For COP Full Height)**



General tolerances DIN6930-m  
Steel stampings 9-32316E  
OR  
General tolerances ISO 9013-342

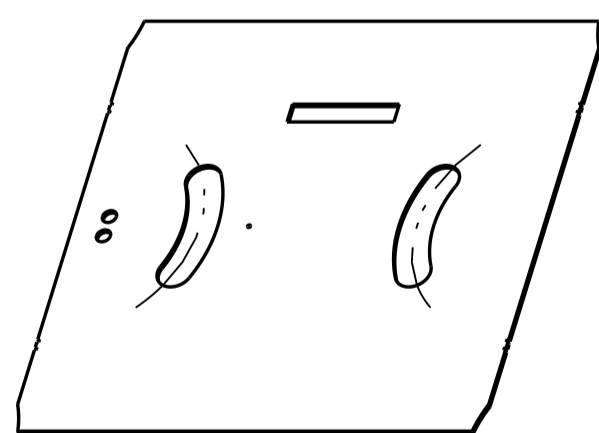
General tolerances ISO 2768	Forming	±120	±120	Separating
Linear dimension	m	m	m	m
Broken edges				
Angular dimension	v	c	c	m
Form and position	9-32313E	L	K	

**ARRANGEMENT 1**



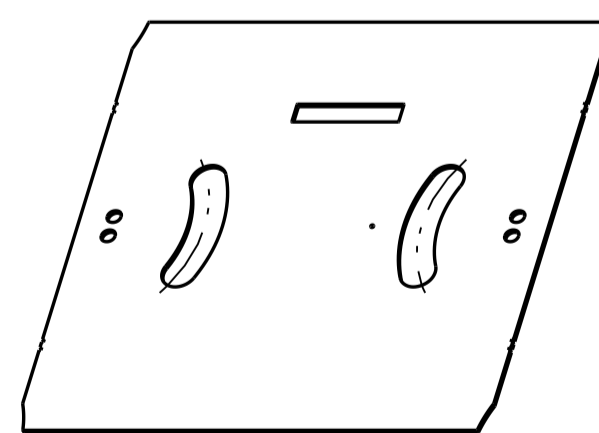
3D VIEW  
SCALE (1:20)  
For CWT on left side  
Or C2 and Handicapped

**ARRANGEMENT 2**



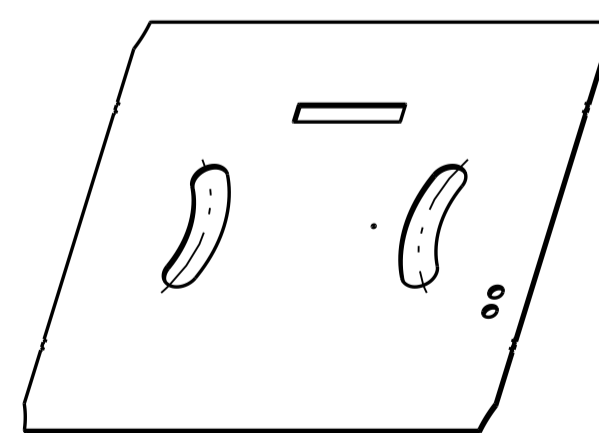
3D VIEW  
SCALE (1:20)  
For CWT on right side

**ARRANGEMENT 3**



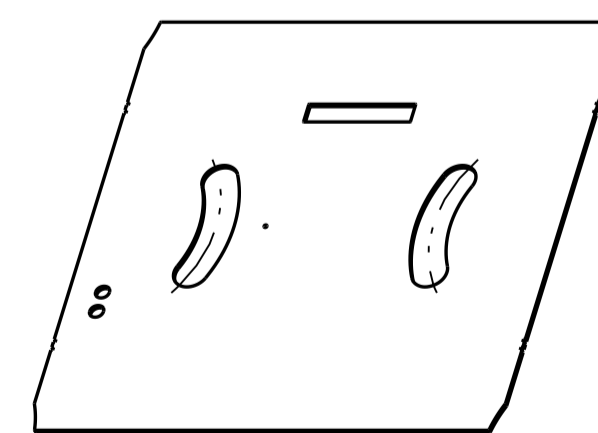
3D VIEW  
SCALE (1:20)  
For ZKE=2 and C2 and Handicapped

**ARRANGEMENT 4**



3D VIEW  
SCALE (1:20)  
For CWT on left side  
Or C2 and Handicapped

**ARRANGEMENT 5**



3D VIEW  
SCALE (1:20)  
For CWT on right side

BK	TK	B	Weight [kg]
1100	1400	600	6.278
1200			4.883
1375		620	5.649
1575			6.537

**Notes:**

- Others dimensions, dimensions T, BK and TK, details, notes, rules and table - See Page 1/5.
- Shown on drawing: T=10.4; BK=1375 and TK=1400.
- All sharp edges removed
- \*\*Rule: Only for COP without emergency light;
- For thermal cutting process, all sharp corners can be rounded with 1mm radius.

√Ra 12.5 (✓)

51949789	Honeycomb Sandwich - 10,4mm	59346137																		
Ident. No.	Item	Code surface	Heat treatment	Draw. / BOM / Model	Weight [kg]															
Modification	AeB	Draw Ver.	Regard BOM																	
KA No.	492976	B.15	Regard BOM																	
KA Date	2020-09-26	Model Ver.	Release Level	Released																
		5.5																		
Group: 01		Remark		Date	Name															
Deco Honeycomb Medium				Scale 1:5	Replaces /Ae	Prepared	2020-07-24	tomiatra												
CA PK 31 LA				Page 5/5	Norms checked	2020-07-24	tomiatra													
INVENTIO AG CH-6052 Hergiswil				Classification 11510	Lead Office SA1	Released	2020-07-28	fernanc15												
				Lang. Z--44918524	Lang. EN															

Confidential  
This document contains confidential information that is proprietary to the Schindler Group. Neither this document nor the information contained herein shall be disclosed to third parties nor used for manufacturing or any other application without written consent of INVENTIO AG.

Vertraulich  
Dieses Dokument enthält vertrauliche Informationen, die geistiges Eigentum der Schindler-Gruppe sind. Die in diesem Dokument enthaltenen Informationen dürfen ohne schriftliches Einverständnis der INVENTIO AG weder Dritten gegenüber offengelegt noch für die Fertigung oder sonstigen Zwecken verwendet werden.

Confidential  
Le présent document contient des informations confidentielles qui sont la propriété du groupe Schindler. Ni ce document, ni les informations contenues dans ce dernier ne doivent être divulgués à des tiers parties, ou utilisées à des fins de fabrication sans l'accord écrit de INVENTIO AG.

\*\*  
\*\*\*\*\*  
\*\*\*\*\*