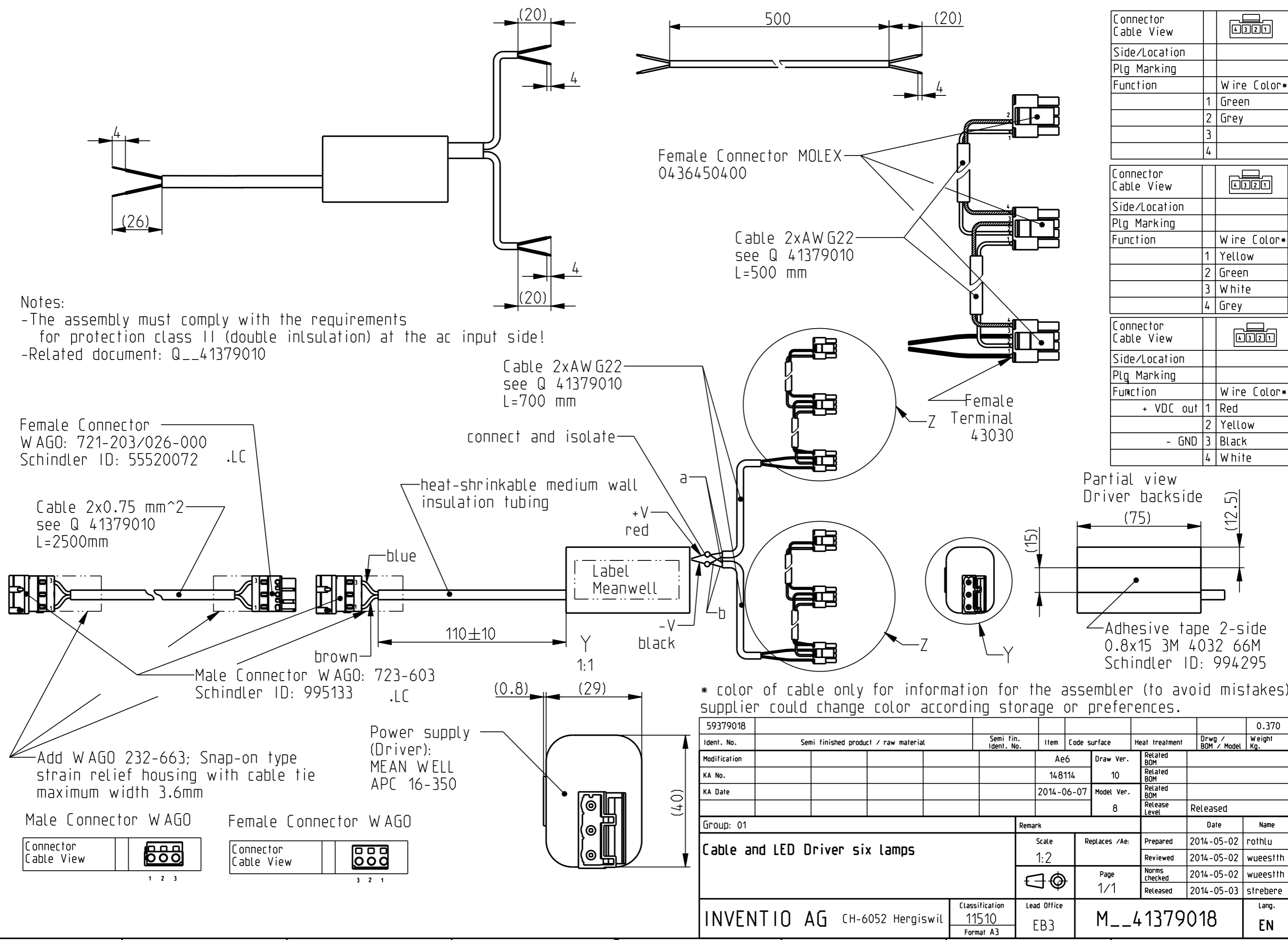


Cet ouvrage est notre propriété intellectuelle. Sans notre autorisation écrite, il ne peut être ni copié d'une manière quelconque, ni être utilisé pour la fabrication, ni non plus être communiqué à des tiers.

Diese Darstellung ist unser geistiges Eigentum. Sie darf ohne unsere schriftliche Zustimmung weder irgendwie kopiert noch zur Anfertigung des Werkes gebraucht oder Dritten Personen bekanntgegeben werden.

This presentation is our intellectual property. Without our written consent, it shall neither be copied in any manner, nor used for manufacturing, nor communicate to third parties.

PRO/E.



Notes:
 -The assembly must comply with the requirements for protection class II (double insulation) at the ac input side!
 -Related document: Q__41379010

Female Connector WAGO: 721-203/026-000 Schindler ID: 55520072 .LC

Cable 2x0.75 mm² see Q 41379010 L=2500mm

Male Connector WAGO: 723-603 Schindler ID: 995133 .LC

Power supply (Driver): MEAN WELL APC 16-350

Female Connector MOLEX 0436450400

Cable 2xAWG22 see Q 41379010 L=500 mm

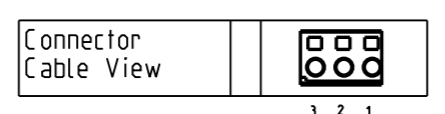
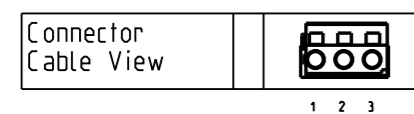
Cable 2xAWG22 see Q 41379010 L=700 mm

Female Terminal 43030

Partial view Driver backside (75) (12.5) (15)
 Adhesive tape 2-side 0.8x15 3M 4032 66M Schindler ID: 994295

Male Connector WAGO

Female Connector WAGO



| | |
|----------------------|-------------|
| Connector Cable View | |
| Side/Location | |
| Plg Marking | |
| Function | Wire Color* |
| | 1 Green |
| | 2 Grey |
| | 3 |
| | 4 |

| | |
|----------------------|-------------|
| Connector Cable View | |
| Side/Location | |
| Plg Marking | |
| Function | Wire Color* |
| | 1 Yellow |
| | 2 Green |
| | 3 White |
| | 4 Grey |

| | |
|----------------------|-------------|
| Connector Cable View | |
| Side/Location | |
| Plg Marking | |
| Function | Wire Color* |
| + VDC out | 1 Red |
| | 2 Yellow |
| - GND | 3 Black |
| | 4 White |

* color of cable only for information for the assembler (to avoid mistakes) supplier could change color according storage or preferences.

| | | | | | | | | |
|--------------------------------|--------------------------------------|----------------------|------|----------------------|-----------------|--------------------------|------------|----------|
| 59379018 | | | | | | | | 0.370 |
| Ident. No. | Semi finished product / raw material | Semi fin. Ident. No. | Item | Code surface | Heat treatment | Drwg / BOM / Model | Weight Kg. | |
| Modification | | | | Ae6 | Draw Ver. | Related BOM | | |
| KA No. | | | | 148114 | 10 | Related BOM | | |
| KA Date | | | | 2014-06-07 | Model Ver. | Related BOM | | |
| | | | | | 8 | Release Level | Released | |
| Group: 01 | Remark | | | | Date | Name | | |
| Cable and LED Driver six lamps | | | | Scale 1:2 | Replaces /Ae: | Prepared 2014-05-02 | rothlu | |
| | | | | | | Reviewed 2014-05-02 | wueestth | |
| | | | | | | Norms checked 2014-05-02 | wueestth | |
| | | | | | | Released 2014-05-03 | streber | |
| INVENTIO AG CH-6052 Hergiswil | | | | Classification 11510 | Lead Office EB3 | M__41379018 | | Lang. EN |
| | | | | Format A3 | | | | |